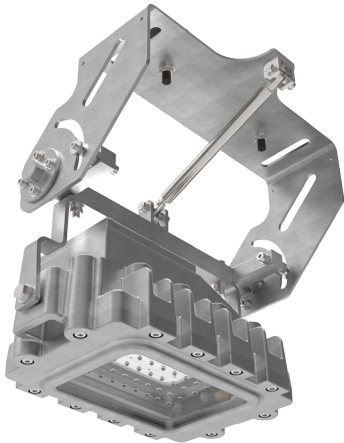
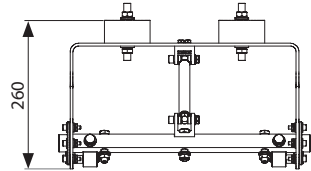
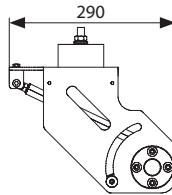
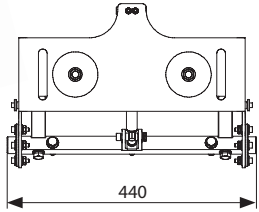
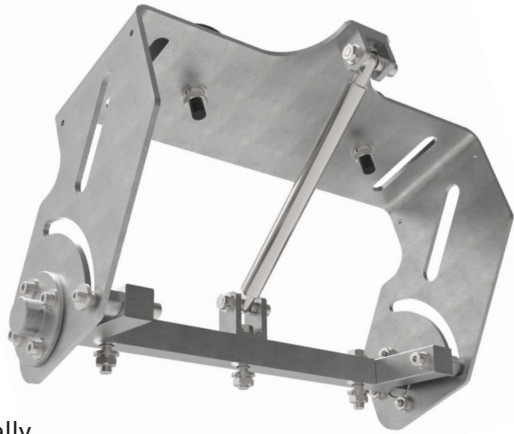


# CRANE DAMPER BRACKET

For Zone 1 LED Floodlights

The **Crane Damper bracket** has been specifically designed to accommodate the Scotia<sup>Ex</sup> and HDL106N LED floodlights, minimising the vibrations experienced when installed on moving offshore/marine cranes.

The bracket utilises a stainless steel gas filled damper which ensures that your luminaire is always facing down, wherever it is installed along the boom, and provides steady illumination over the desired target area.



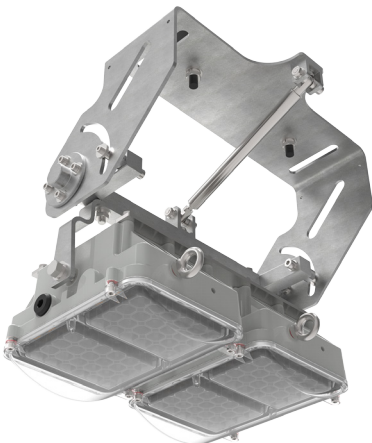
## SCOTIA<sup>Ex</sup> WITH CRANE DAMPER BRACKET

For an Ex d solution, use the Scotia<sup>Ex</sup> floodlight which is available in outputs from 6000lm upto 12500lm.

Crane Damper Bracket		
Weight	Material	Installation
10.5kg	Stainless Steel 316	via anti-vibration mounts

Crane Damper Bracket Assembly	SSCO1-000009
-------------------------------	--------------

Full order code example: SCOD/12L/LE + SSCO1-000009  
Please refer to the Scotia<sup>Ex</sup> datasheet at [www.chalmit.com](http://www.chalmit.com) for full luminaire specifications



## HDL106N2\* WITH CRANE DAMPER BRACKET

For an Ex e solution, use the twin HDL106N floodlight which is available in a variety of beam distributions up to a maximum of 13000lm.

\*Other configurations available. Please contact Chalmit Sales.

Crane Damper Bracket		
Weight	Material	Installation
10.5kg	Stainless Steel 316	via anti-vibration mounts

Crane Damper Bracket Assembly	SHDL1-000002
-------------------------------	--------------

Full order code example: HDL106N2HNVW004 + SHDL1-000002  
Please refer to the HDL106N datasheet at [www.chalmit.com](http://www.chalmit.com) for full luminaire specifications