

Telephone Protection Hood Type 404 Metal

Especially suitable for use in noisy work environments



Overview

The telephone protection hood is an excellent aid to improve audibility in noisy surroundings in places where open telephones have to be installed for economic reasons. The special shape of the hood and its inner lining with sound-absorbing material optimally reduces noise in the area of the telephone. The overhearing of telephone conversations from outside the hood is also impeded.

The best acoustic effect is achieved with the back of the protection hood facing the noise sources or greatest noise source (see directional diagram of sound-level reduction).

The protection hood is made of steel sheet or stainless steel and contains an inner lining with sound-absorbing rock wool boards protected with a perforated plate cover.

Features

- Sound insulation up to 25 dB(A)
- Weatherproof design
- RAL coatings yellow or red, other colours on request
- Stainless steel or sheet steel variants available



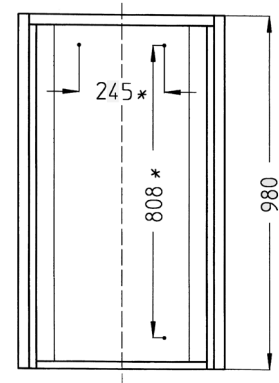
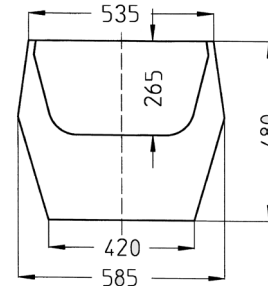
Powering Business Worldwide

Specifications

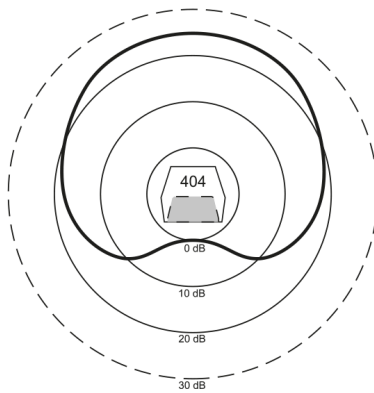
Housing	
Material	Optionally galvanized sheet steel or stainless steel
Coating	Powder-coated, yellow, red or stainless steel, other colours on request
Dimensions	See dimension drawing
Weight	
Sheet steel	35 kg
Stainless steel	40 kg
Console	17 kg
Console colour	Yellow
Noise absorption	Up to 25 dB(A)
Material sheet steel variant	
outer material	ST37-2
inner perforated plate	ST37-2
Material stainless steel variant	
outer material	1.4571
inner perforated plate	1.4301
Material insulation	Rockwool RAF-SE

General arrangement drawing (all dimensions in mm)

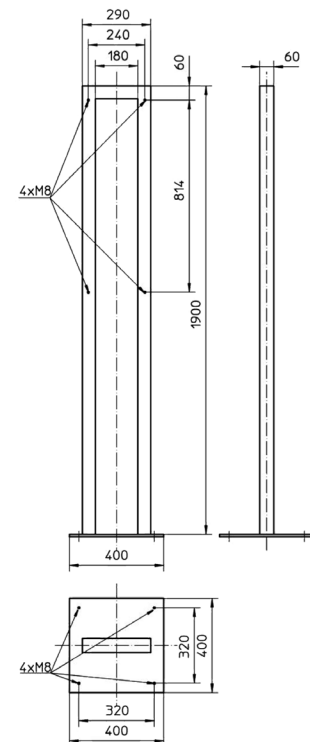
All dimensions are production-dependent approximates.



Directional diagram of sound-level reduction



Console



Ordering data

Type	Designation	Colour	Article number
Model 404	Stainless steel protection hood		FHF 118 901 11
Model 404	Sheet steel protection hood	yellow (RAL 1023)	FHF 118 901 01
Model 404	Sheet steel protection hood	red (RAL 3020)	FHF 118 901 14
	Sheet steel console	yellow	FHF 118 901 03