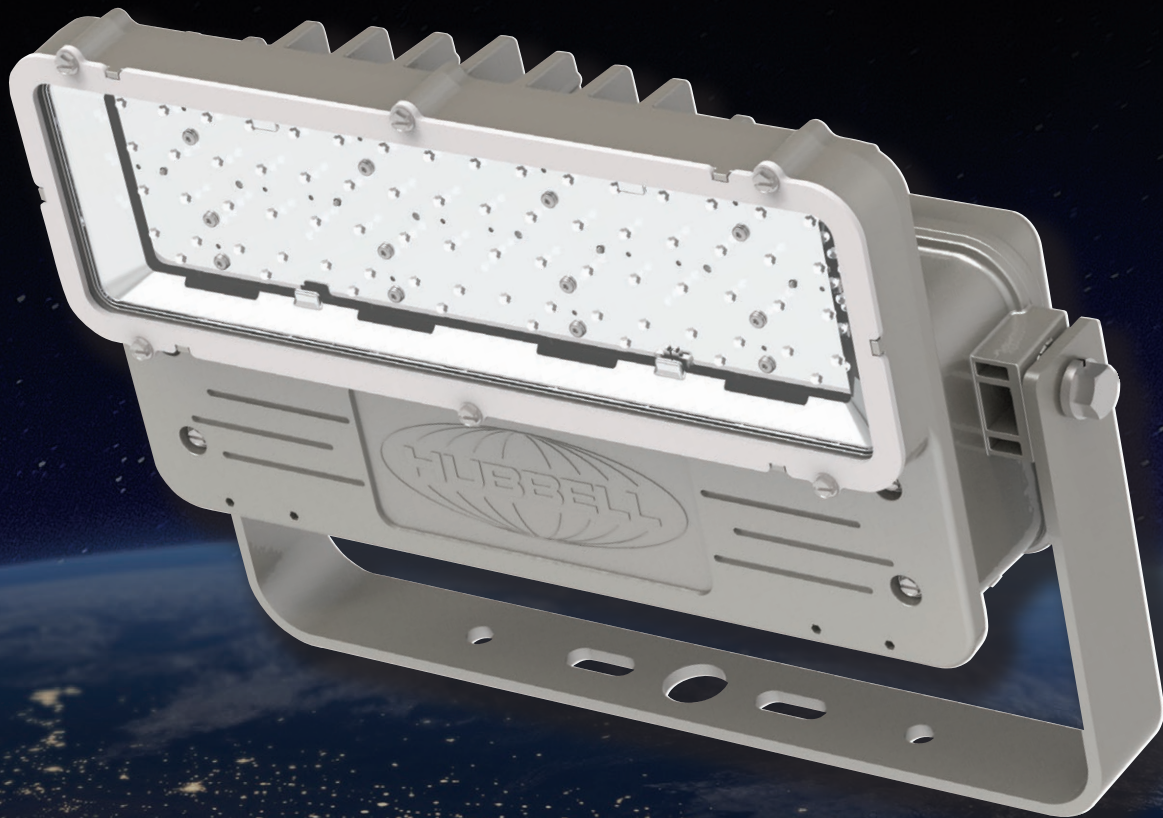


KILLARK®

KFL-X

Next-Generation Floodlight

for Harsh and Hazardous Environments



www.hubbell-killark.com



KFL-X

PETRO*BRIGHT*[®]



Class I, Div. 2, Groups A,B,C,D
Class II, Div. 1&2, Groups EFG
Class III

Suitable for wet locations
Marine Rated (US Only)

Type 3, 4X
IP66

Tamb -50°C to +65°C

Zone 2 and Zone 21 areas

Ex ec IIC T5/T4 Gc

Ex tb IIIC T95°C Db, IP66

Standard Version

-40°C<Tamb<+65°C<120W

-40°C<Tamb<+40°C/+55°C>120W

Battery Backup Version

-20°C<Tamb<+50°C

CATALOG LOGIC

KFL 30 iE1 30 = 3070

KFL Series

Lumen Output

7 – 7,000 lumens
10 – 10,000 lumens
14 – 14,000 lumens
20 – 20,000 lumens
30 – 30,000 lumens

Emergency

iE05 – 500 lumens during 180 minute emergency*
iE1 – 1000 lumens during 90 minute emergency*

Voltage

30 – 120-277 VAC 50/60 Hz (all models)
33 – 347-480 VAC 50/60 Hz (non emergency models only)
34 – 125-250 VDC; 120-277 VAC 50/60 Hz (non emergency models)

Logic Options

3070 – 3000K CCT & 70 CRI LEDs
Turtle – Amber LEDs**
Green – Migratory Bird Friendly**
Px – Photocell
SY – Stainless Steel Yoke
PL – Polycarbonate Lens
PM – Pole Mount

Optics (not available on 14 or 30 lumen outputs)

Blank – no supplemental optics
W – Wide
S – Spot
P – Perimeter

* Only available on 7 and 14 lumen outputs

** Only available on 14 output selections

LED COLOR OPTIONS



5000K

Crisp white light maximizes the output of the LEDs with a color that is equivalent to noontime sun



3000K

Warm white light that is similar in color to a soft white incandescent



AMBER

Pure Amber LEDs have zero energy in the blue light spectrum that is designed as a marine life friendly option for coastal regions



GREEN

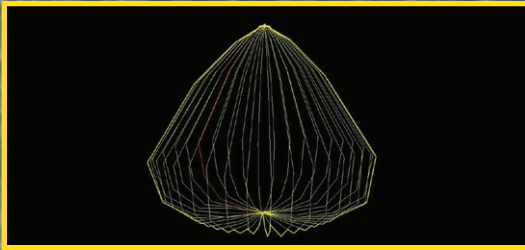
Pure Green LEDs are designed to avoid using wavelengths that disorientate and sometimes attract nocturnal migrating birds.

INTELLIGENT BATTERY BACKUP

- Self-diagnostic monitoring
- Automatic Self-Testing
- Fixture health status indication
- User initiated Self-Test
- 15 minute delay once power is restored
- Automatic unit transfer in brown-out conditions

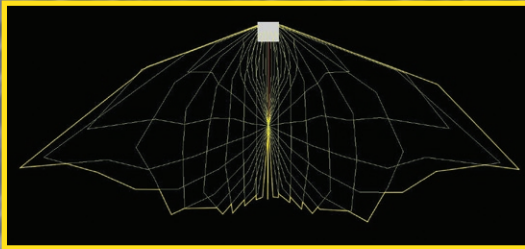


OPTIC OPTIONS



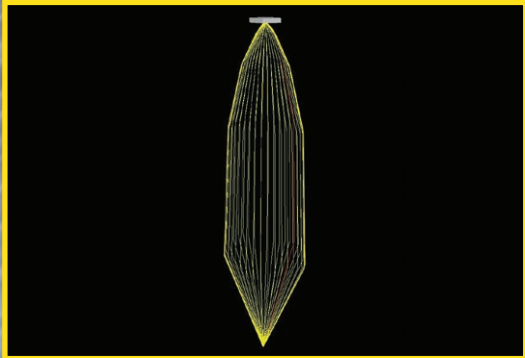
Normal

Delivers evenly distributed light, perfect for a general area lighting with normal mounting heights.



Perimeter

This optic was designed specifically for the needs of perimeter lighting. This asymetric beam pattern offers a low and wide distribution that is perfect for illuminating fence lines



Spot

Offers high lumen density at taller mounting heights, perfect for focused lighting areas.

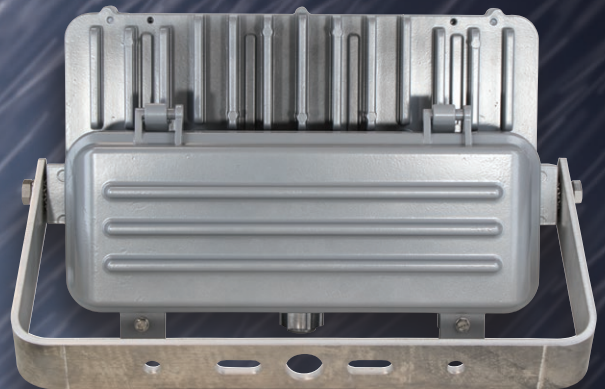
MOUNTING OPTIONS



Pole Mount

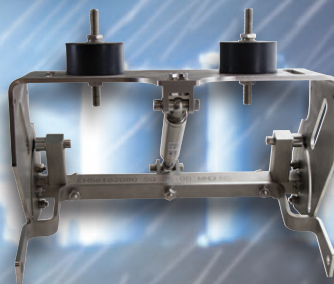
(Coming Soon!)

1 ¼" and 1 ½" NPT Pipe
Tilt-aim allows for precise illumination when the KFL-X is mounted on the end of a pole



Yoke

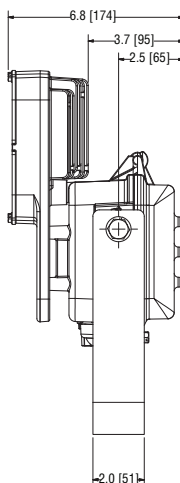
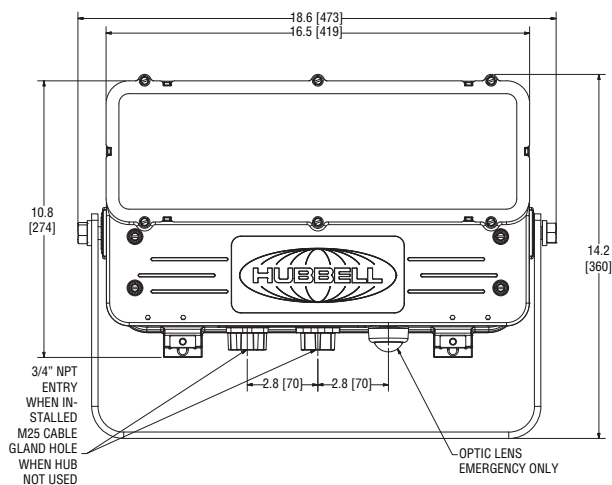
Standard mounting for KFL-X floodlight



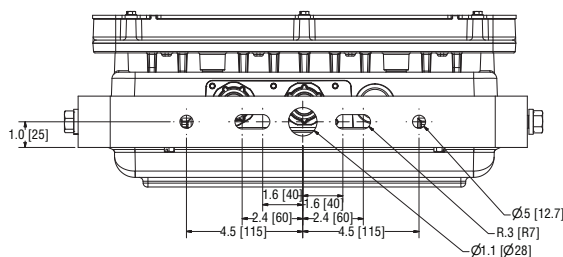
Jib Crane

Auto-leveling with shock-absorber, and vibration isolators designed for the demands of luminaires mounted to jib cranes

DIMENSIONS



Housing Material: Copper-Free Aluminum
 Finish: Powder Epoxy Painted
 External Hardware: 316 Stainless Steel
 Weight: 25lbs (11.3kgs)



GLOBAL



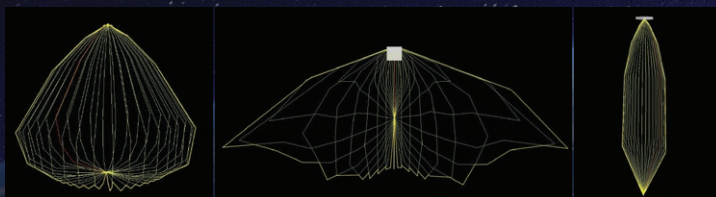
Quad Approvals for NEC/CEC/IECEx/ATEX
 -40°C to +65°C ambient rated

INTELLIGENT



Intelligent Battery backup with built in
 self-monitoring & testing

VERSATILE



Vast Range of Optics including spot & wide
 options

EASY INSTALL



Clamshell splice box for easy and unimpeded
 wiring access



KILLARK®

2112 Fenton Logistics Park Blvd.
Fenton, MO 63026
TEL: (314) 531-0460 FAX: (314) 531-7164
www.hubbell-killark.com • killarkinfo@hubbell.com

Hubbell® Construction and Energy

A Division of Hubbell, Inc.
HKPR-KFLX 03-20 © Killark, 2020

Hubbell Canada LP

870 Brock Road South
Pickering, Ontario L1W 1Z8
(905) 839-1138
infohclp@hubbell-canada.com

Hubbell Products Mexico

Calle 5 Sur No. 105 Col. Parque
Ind. Toluca 2000
Toluca Edo. Mex. CP 50200
Tel: (01 52) 559-151-9999
info@hubbell.com.mx