

# Metallic dome head (Exd/Exe) stopping plugs - PD-U Series



Type PD-U

Redapt PD-U series of stopping plugs provide a method of blanking off unused entries in hazardous area approved equipment whilst ensuring the integrity and Ex approval of the installation is maintained.

Manufactured to facilitate easy installation, they are also supplied complete with a captive O-ring seal. The O-ring is located within a recess on the face of the product, helping to protect the O-ring from the environmental damage and ensuring it is not displaced during installation.

## Materials

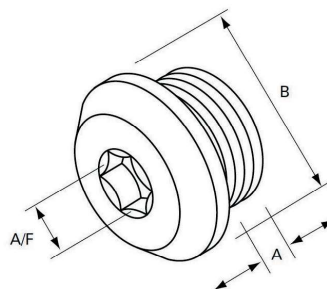
- Brass CZ121
- 316 stainless steel
- Aluminium
- Mild Steel

## Plating options

- Electroless nickel
- Zinc
- Chromated
- Others on application

## Threadforms

- Metric
- NPT
- NPSM
- PG
- ISO pipe (BSP)
- ET



## Dimensions

Size	Thread length (A)	Hex (Allen) key A/F	Diameter (B)
M16	15.00	10.00	22.00
M20	15.00	10.00	27.00
M25	15.00	10.00	31.75
M32	15.00	10.00	40.00
M40	15.00	10.00	47.63
M50	15.00	10.00	57.15
M63	15.00	14.00	69.85
M75	15.00	14.00	82.55

## Technical specifications

### Code of protection categories

ATEX: I M2/II 2 GD

IECEX: Ex db I/IC Mb/Gb, Ex eb I/IC Mb/Gb, Ex tb I/IC Db (Aluminium not mining)

CSA: Ex db / Ex eb IIC Gb IP66/67/68

CI I Zn 1 AEx eb / AEx db IIC Gb

CI I Div1 Gr ABCD CI II Gr EFG CI III; Type 4X/6P

### Compliance standards

ATEX: EN 60079-0, EN 60079-1, EN 60079-7, EN 60079-31

IECEX: IEC 60079-0, IEC 60079-1, IEC 60079-7, IEC 60079-31

CSA: CAN/CSA C22.2 No. 60079-0, No. 60079-1, No. 60079-7, ANSI/UL 60079-0, 60079-1, 60079-7, UL1203

### Certificate details

ATEX: ITS16ATEX101335X

IECEX: IECEX ITS 16.0012X

EAC: RU C-GB.MIO62.B.06226

CSA: CSA01CA1248014X

INMETRO: NCC 18.0133 X

CCoE: P362565/1

### Temperature

Temperature will depend on the type of O-ring used:

None: -60°C to +200°C

Nitrile: -30°C to +80°C (supplied as standard)

EPDM: -50°C to +100°C

Neoprene: -40°C to +80°C

Viton: -20°C to +180°C

Silicone: -60°C to +180°C

Fluorosilicone: -60°C to +130°C

The maximum temperature is limited to +150°C for Group I applications

### Ingress protection (IP):

IP66, IP68, CSA Enclosure Type (NEMA 4X, 6P)

### Part number:

Please refer to page 10 for part numbering system

[Download certificates and documents here](#)