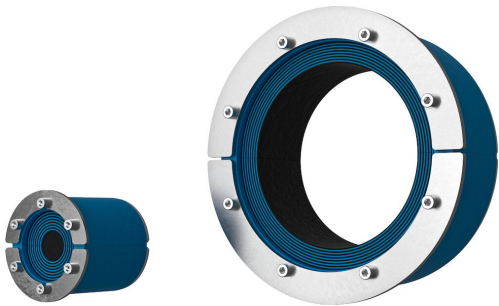


Roxtec RS seal

Penetration seal for a single cable or pipe.

The Roxtec RS is a seal for single cables or pipes in metal sleeves or existing holes. The entry seal has two halves with removable layers making it adaptable to cables and pipes of different sizes. The design of the transit makes it easy to install around existing cables or pipes.

- Fire rated
- Gas-tight
- Watertight
- Dust-tight
- Rodent resistant
- Quick and easy to install
- Vibration tested



Ratings & certificates

Certificates are continuously added, renewed and replaced, please visit regularly to ensure compliance.

Fire

- A-CLASS according to IMO 2010 FTP Code

Tightness

- Gas: 2.67 bar (catastrophic)

Supports

- H-CLASS according to IMO 2010 FTP Code+ HC-fire load curve
- E/EI rating according to EN 1366-3
- E/EI rating according to EN 45545
- F/T rating according to UL 1479
- Water: 4 bar (catastrophic)

Installation

Structure of installation



Metal

Concrete &
brick

Sandwich



Gypsum

Mounting type

Existing
hole

Sealing component data

Here you find technical information about each specific part of our system.

Round frames/seals

- Roxtec RS seal

Sealing components

- Roxtec Lubricant

Pre-configured transit kits

Product	Configuration	External dimension Ø (mm)	Aperture dimension Ø (mm)	Weight (kg)	Art. No
RS 25 AISI316	1x (3.6-12.0)	32	25 - 26	0.04	RS00100251023

Product	Configuration	External dimension Ø (mm)	Aperture dimension Ø (mm)	Weight (kg)	Art. No
RS 31 AISI316	1x (4.0-17.0)	37	31 - 32	0.1	RS00100311023
RS 43 AISI316	1x (4.0-23.0)	53	43 - 45	0.24	RS00100431023
RS 50 AISI316	1x (8.0-30.0)	60	50 - 52	0.31	RS00100501023
RS 68 AISI316	1x (26.0-48.0)	78	68 - 70	0.5	RS00100681023
RS 75 AISI316	1x (24.0-54.0)	85	75 - 77	0.6	RS00100751023
RS 100 AISI316	1x (48.0-70.0)	110	100 - 102	1	RS00101001023
RS 125 AISI316	1x (66.0-98.0)	145	125 - 127	1.6	RS00101251023
RS 100 AISI316 WOC	1x (48.0-70.0)	110	100 - 102	0.8	RS00001001023
RS 125 AISI316 WOC	1x (66.0-98.0)	145	125 - 127	1.4	RS00001251023
RS 150 AISI316 WOC	1x (93.0-119.0)	170	150 - 152	1.6	RS00001501023
RS 175 AISI316 WOC	1x (119.0-145.0)	195	175 - 177	2.3	RS00175750021
RS 200 AISI316 WOC	1x (138.0-170.0)	220	200 - 203	2.7	RS00200750021
RS 225 AISI316 WOC	1x (151.0-181.0)	225	225 - 228	3.2	RS00002250021
RS 250 AISI316 WOC	1x (176.0-206.0)	250	250 - 253	3.3	RS00002500021
RS 300 AISI316 WOC	1x (206.0-236.0)	300	300 - 303	5.7	RS00003000021
RS 350 AISI316 WOC	1x (244.0-286.0)	350	350 - 353	7.2	RS00003500021
RS 400 AISI316 WOC	1x (294.0-336.0)	400	400 - 403	9.4	RS00004000021
RS 450 AISI316 WOC	1x (344.0-386.0)	450	450 - 453	10.7	RS00004500021
RS 500 AISI316 WOC	1x (394.0-436.0)	500	500 - 503	13	RS00005000021
RS 550 AISI316 WOC	1x (444.0-486.0)	550	550 - 553	14.4	RS00005500021
RS 600 AISI316 WOC	1x (494.0-536.0)	600	600 - 603	15.7	RS00006000021
RS 644 AISI316 WOC	1x (538.0-580.0)	644	644 - 647	17	RS00006440021