

EJB and EJW enclosures for IEC applications

Ex d IIB T4-T6, Ex ia for Zones 1, 2, 21, 22
NEMA 4; IP65

IECEX/ATEX
GOST-R
GOST-K

1E

Applications:

EJB/EJW IEC ATEX enclosures are used in threaded rigid conduit systems in hazardous areas:

- To function as a splice box, pull box or equipment and device enclosure
- Indoors and outdoors

Features:

- Ground joint (bolted) construction throughout permits use in hazardous areas
- Bodies have thick walls so they can be factory drilled and tapped to meet IEC requirements for Zones 1, 2, 21 and 22 hazardous areas
- Covers are provided with a neoprene o-ring gasket to meet NEMA/EEMAC 4 requirements for a watertight seal
- Internal grounding lug provides a means to ground enclosed equipment
- Ambient temperature range: -20°C to +55°C
- Rated voltage: 690V
- Rated maximum current: up to 1200 amperes
- Mounting plate included

Standard materials:

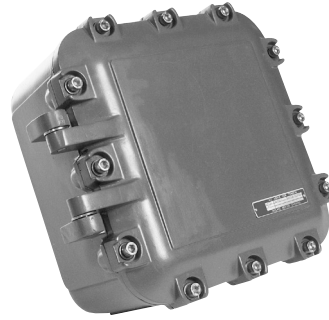
- Bodies and covers – aluminum
- EJW series – welded steel

Standard finish:

- Epoxy powder coat standard, internal and external

Ordering information – enclosures:

Type	Dissipation power			Maximum rated current	Cat. #	Weight (kg.)	Quantity
	T6	T5	T4				
EJB 12R	30	60	100	40	NOR 000 001 170 438	3.00	1
EJB 12A	30	60	100	40	NOR 000 001 170 446	3.60	1
EJB 14R	80	140	240	65	NOR 000 001 170 462	8.30	1
EJB 23R	60	140	240	100	NOR 000 001 170 488	11.00	1
EJB 110	125	170	295	160	NOR 000 001 170 496	22.00	1
EJB 120	150	270	480	300	NOR 000 001 170 503	28.50	1
EJB 120 M3	150	270	480	300	NOR 000 111 170 601	28.50	1
EJB 120 M4	150	270	480	300	NOR 000 111 170 606	28.50	1
EJB 121	150	280	500	350	NOR 000 001 170 511	32.00	1
EJB 130	200	340	590	450	NOR 000 001 170 529	35.30	1
EJB 131	200	350	610	500	NOR 000 001 170 537	39.00	1
EJB 240	250	400	700	800	NOR 000 001 170 545	52.30	1
EJB 241	250	400	700	850	NOR 000 001 170 553	56.80	1
EJB 241 M1	250	400	700	850	NOR 000 111 170 469	54.00	1
EJB 241 M2	250	400	700	850	NOR 000 111 170 451	51.00	1
EJW 250	250	340	560	1200	NOR 000 001 190 139	145.00	1
EJW 251	380	520	850	1200	NOR 000 001 190 197	167.00	1
EJW 350	380	520	850	1200	NOR 000 001 190 171	168.00	1
EJW 351	450	600	1000	1200	NOR 000 111 190 062	175.00	1
EJW 561	600	730	1000	1200	NOR 000 111 190 066	380.00	1



EJB 241 M1

Options:

Description

- Factory installed pushbuttons, signal lamps, switchgear, rotary handles, actuators, rectangular glass windows..... **Contact factory**
- Factory installed terminal blocks..... **Contact factory**
Up to 240mm²

Suffix

Certifications and compliances:

ATEX certificate – LOM 02ATEX3060U (empty enclosures):

- Ex II 2 G Ex d IIB
- EN60079-0:2006
- EN60079-7:2007
- EN60079-18:2004

ATEX certificate – LOM 03ATEX2004X (custom control panels):

- Ex II 2 G Ex d IIB T4...T6
- Ex II 2(1) G Ex d[ia] IIB T4...T6
- Ex II 2(2) G Ex d[ib] IIB T4...T6
- Ex II 2(1/2) G Ex d[ia/ib] IIB T4...T6
- EN60079-0:2006
- EN60079-1:2007
- EN60079-11:2007

Metallic enclosures^A:

Marking to 94/9/CE

- Ex II 2 G - EEx d IIB T6 - T4 - T6^A

EC - type examination certificate

- LOM 02ATEX3060U

Degree of protection

- IP65 acc. EN60529

Terminals

- To 240mm²

Material

- Light alloy, less EJW series in welded steel; gray coating

Components:

Marking to 94/9/CE

- Ex II 2 G - EEx d IIB

EC - type examination certificate



- LOM 02ATEX3060U

Degree of protection

- IP65 acc. EN60529

^AAcc. of the mounted elements.

Ordering information – components:

	Description	Cat. #	Quantity	
	Pushbuttons with 1NO + 1NC contact block			
	Sensitive pushbutton + labels «White», «I», «0», «STOP», «START»	NOR 000 001 170 004	1	
	Sensitive pushbutton locked by padlock in pressed position + labels «White», «I», «0», «STOP», «START»	NOR 000 001 170 005	1	
	Sensitive pushbutton locked by padlock in depressed position + labels «White», «I», «0», «STOP», «START»	NOR 000 001 170 006	1	
	Mushroom sensitive pushbutton + labels «0», «STOP», «OFF», «RED», «YELLOW»	NOR 000 001 170 007	1	
	Mushroom retained pushbutton + labels «0», «STOP», «OFF», «RED», «YELLOW»	NOR 000 001 170 008	1	
	Mushroom retained pushbutton and locked by padlock + labels «0», «STOP», «OFF», «RED», «YELLOW»	NOR 000 001 170 009	1	
	Key pushbutton	NOR 000 001 170 010	1	
	Mushroom key pushbutton	NOR 000 001 170 011	1	
	Sensitive pushbutton bottom box + label «RESET»	NOR 000 001 170 012	1	
		Contact blocks		
	1NO	NOR 000 001 170 013	1	
1NC	NOR 000 001 170 014	1		
	Pack labels			
One label of each inscription «I», «Arrow», «ON», «RESET», «TEST», «Green», «Red», «Yellow», «Black»	NOR 000 001 170 015	1		
	Signal lamps			
	Direct lamp 240V + lens «White», «Amber», «Red», «Yellow», «Green» + lampholder + 3W lamp	NOR 000 001 170 016	1	
	Direct lamp 130V + lens «White», «Amber», «Red», «Yellow», «Green» + lampholder + 2.6W lamp	NOR 000 001 170 017	1	
	Direct lamp 24V + lens «White», «Amber», «Red», «Yellow», «Green» + lampholder + 1.2W lamp	NOR 000 001 170 018	1	
	Indirect lamp by Trafo 380-400/6V + lens «White», «Amber», «Red», «Yellow», «Green» + lampholder + 1.2W lamp	NOR 000 001 170 019	1	
	Direct LED 230V + lens «White», «Amber», «Red», «Yellow», «Green» + lampholder	NOR 000 001 170 116	1	
	Direct LED 130V + lens «White», «Amber», «Red», «Yellow», «Green» + lampholder	NOR 000 001 170 117	1	
	Direct LED 24V + lens «White», «Amber», «Red», «Yellow», «Green» + lampholder	NOR 000 001 170 118	1	
		Control switches, locked by padlock + label		
Reversed «0-1», 2P, 12A + rotary handle	NOR 000 001 170 020	1		
Reversed «0-1», 2P, 25A + rotary handle	NOR 000 001 170 021	1		
Reversed «0-1», 3P, 25A + rotary handle	NOR 000 001 170 022	1		
Reversed «1-2», 1P, 12A + rotary handle	NOR 000 001 170 023	1		
Reversed «1-2», 2P, 12A + rotary handle	NOR 000 001 170 024	1		
Reversed «1-0-2», 1P, 12A + rotary handle	NOR 000 001 170 025	1		
Reversed «1-0-2», 2P, 12A + rotary handle	NOR 000 001 170 026	1		
Reversed «0-1», 2P, 12A + rotary handle	NOR 000 001 170 027	1		
Reversed «0-1-M», 2P, 12A + rotary handle	NOR 000 001 170 028	1		

1E

EJB and EJW enclosures for IEC applications

Ex d IIB T4-T6, Ex ia for Zones 1, 2, 21, 22
NEMA 4; IP65

IECEX/ATEX
GOST-R
GOST-K

1E

Ordering information – components (continued):

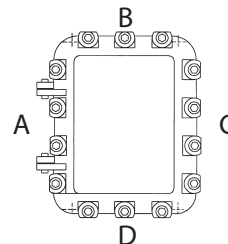
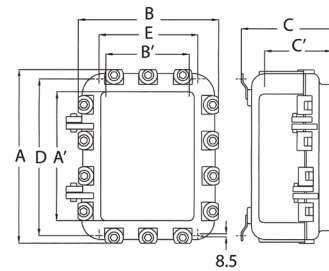
Description	Cat. #	Quantity
Rotary handle bottom enclosure locked by padlock		
Actuator for 25A <63A switch	NOR 000 001 170 029	1
Actuator for 63A <100A switch	NOR 000 001 170 030	1
Actuator for 100A <250A switch	NOR 000 001 170 031	1
Actuator for 250A <1000A switch	NOR 000 001 170 032	1
Neutral label for switches		
Label 60 x 60	NOR 000 001 170 033	1
Label 70 x 70	NOR 000 001 170 034	1
Label 85 x 85	NOR 000 001 170 035	1
Special actuators		
Actuator for MCB of 1P - ABB + label	NOR 000 001 170 933	1
Actuator for MCB multi-pole - ABB + label	NOR 000 001 170 925	1
Actuator for MCB of 1P - M&G + label	NOR 000 111 170 600	1
Actuator for MCB multi-pole - M&G + label	NOR 000 111 170 569	1
Actuator for MCB POWER + label	NOR 000 111 170 565	1
Bushings[Ⓟ]		
3/4" NPT 3P + N + PE 4 x 10mm ² + 1 x 6mm ² 50A	NOR 000 001 170 892	1
1" NPT 3P + N + PE 4 x 16mm ² + 1 x 10mm ² 75A	NOR 000 001 170 909	1
1 1/2" NPT 3P + N + PE x 50mm ² + 1 x 10mm ² 150A	NOR 000 001 170 917	1
Bus bars		
>350A, 3P + N + T + control 19 x 1.5mm ² application size 1	NOR 000 001 170 036	1
>350A <500A, 3P + N + T + control 19 x 1.5mm ² application size 1	NOR 000 001 170 037	1
>500A <630A, 3P (2 bars per phase) + N + T + control 19 x 1.5mm ² application size 2	NOR 000 001 170 038	1
>630A <800A, 3P (2 bars per phase) + N + T + control 19 x 1.5mm ² application size 2	NOR 000 001 170 039	1
Windows		
60 x 60mm type: M 6060	NOR 000 001 170 000	1
75 x 75mm type: M 7575	NOR 000 001 170 001	1
110 x 50mm type: M 11050	NOR 000 001 170 002	1
110 x 75mm type: M 11075	NOR 000 001 170 003	1
End bars cover		
End bars cover	NOR 000 111 170 154	1



1E

Dimensions (in millimeters):

Type	External			Windows	Internal			Mounting	
	A	B	C		A'	B'	C'	D	E
EJB 12R	216	130	106		178	86	59	220	144
EJB 12A	216	130	162		178	86	115	220	144
EJB 14R	420	150	143		367	104	95	424	159
EJB 23R	337	217	211		274	164	166	333	219
EJB 110	371	371	233		311	311	179	327	327
EJB 120	474	371	233		414	311	177	430	327
EJB 120 M3	474	371	233	75 x 110	414	311	177	430	327
EJB 120 M4	474	371	233	180 x 140	414	311	177	430	327
EJB 121	474	371	305		414	311	249	430	327
EJB 130	577	371	233		517	311	177	533	327
EJB 131	577	371	305		517	311	249	533	327
EJB 240	680	474	233		619	414	175	636	430
EJB 241	680	474	305		619	414	247	636	430
EJB 241 M1	680	474	305	230 x 255	619	414	247	636	430
EJB 241 M2	680	474	305	465 x 255	619	414	247	636	430
EJW 250	890	474	280		816	351	200	852	387
EJW 251	890	457	512		816	351	370	852	387
EJW 350	890	572	396		816	466	254	852	502
EJW 351	890	572	512		816	466	370	852	502
EJW 561	1280	806	512		1194	685	370	1236	727



[Ⓟ] Length of cables is 1m; others available upon request.

Customized electrical equipment:

EJB/EJW IEC ATEX enclosures can be customized to meet individual requirements. Please contact Eaton's Crouse-Hinds customer service for more information.

Possible electrical components mounted inside EJs:

- Bus bars; terminals; low voltage transformers; air circuit breakers; automatic circuit breakers; control and operation circuits; electronic apparatus; heating elements; associated SI apparatus; batteries with volume $< 1/100$ of the free enclosure volume; starters and ballast for discharge lamps; capacitors of 3 seconds discharge time; servomotors without ventilation

Certifications and compliances:

Marking to 94/9/CE:

-  II 2 G - Ex d IIB T6 - T4 - T6

EC - type examination certificate:

- LOM 03ATEX2004X

T (ambient of use):

- -20°C to +55°C

Rated voltage:

- 690V

Rated current:

- Up to 1200A

Degree of protection:

- IP65 acc. EN60529

Terminals:

- Up to 240mm²

