

# Ex II signalling hooter mHP 12

High-volume signalling device  
for applications in zones 1 and 2



## Overview

The mHP 12 Ex Signalling Hooter is designed for warning purposes in potentially explosive areas of zones 1 and 2.

The hooter is available with the common supply voltages and produces a sound level of approx. 108 dB(A).

The device is driven by a powerful, non-polarized electromagnet with an adjustable tappet that hits the membrane 100 to 120 times per second.

## Features

- Ingress protection IP 54
- Protection class II
- Protection type: II 2 G Ex em b IIC T4 Gb
- Volume: approx. 108 dB(A)
- Cable gland M20 x 1.5

**EATON**

Powering Business Worldwide

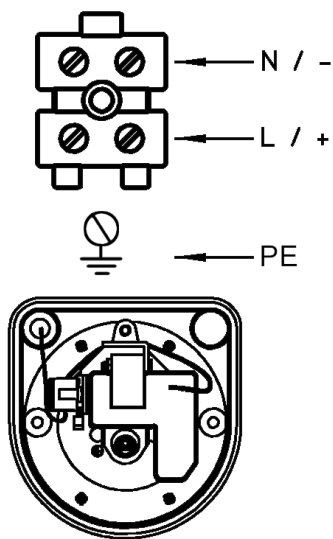


## Certification

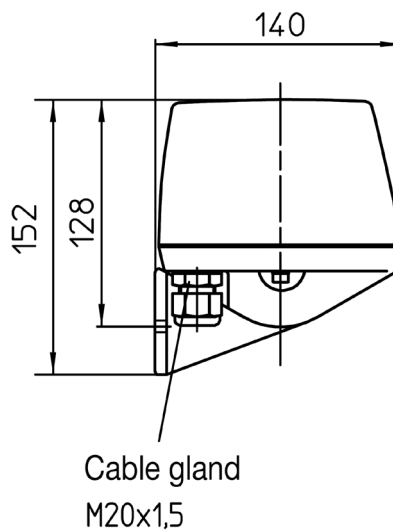
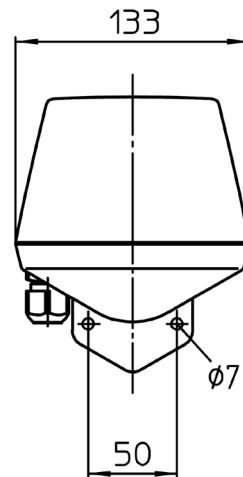
Protection type	II 2 G Ex em b IIC T4 Gb
-----------------	--------------------------

## Specifications

Housing	Polycarbonat
Colour	Black
Ingress protection	IP 54 according to IEC 60529
Protection class	II
Cable gland	M20 x 1,5
Connection terminals	Terminal capacity 2.5 mm <sup>2</sup>
Operating conditions	Indoors and outdoors
Operating position	Sound outlet facing downward
Duty cycle	ED 75 %
Volume	Approx. 108 dB(A), in 1 m distance
Temperature range	
Operation	-20 °C to +70 °C
Storage	-40 °C to +80 °C
Weight	ca. 1,1 kg



## General arrangement drawing (All dimensions in mm)



## Ordering data

Type	Designation	Temperature class	Input voltage	Current consumption	Art. No.*
mHP 12	Signalling hooter with cable gland	T4	24 VDC	0.3 A	FHF 401 030 111 210
mHP 12	Signalling hooter with cable gland	T4	230 VAC	0.07 A	FHF 401 030 111 207

\* All models are certified according to ATEX IECEX. INMETRO variants are available on request.

**Note:** All specifications, dimensions, weights and tolerances are nominal (typical) and Eaton reserve the right to vary all data without prior notice. No liability is accepted for any consequence of use.