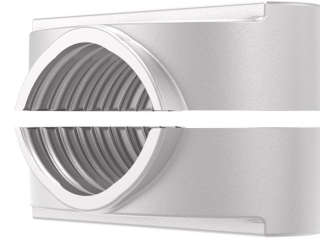


## Single/Parallel Cable Cleat, Dual-Bolt, Aluminium

By Hawke  
Catalog # [AL2B](#)



Cable Cleat, Single/Parallel, Dual-Bolt, Aluminium

### Features

- Increased Clamping Control: Dual bolt design improves hold and stability
- Lightweight Aluminium Construction: Cast construction for easier handling and reduced load
- Flexible Installation Access: Side and top opening design for varied layouts
- Single and Parallel Compatibility: Supports multiple cable configurations

### Specifications

Industry Standard(s) IEC 61914

### Conductor

Cable Type Single/Parallel

### Configuration

Orientation Side & Top Opening

### General

Type Metallic  
Material Aluminum LM\*

### Operational

Operating Temperature Range -60°C to +120°C  
Celcius